

Tarrawonga Coal Project

Environmental
Assessment

ATTACHMENT 5

COMMUNITY
INFORMATION

TARRAWONGA COAL MINE Community Newsletter

Issue 1, Autumn 2011



From the Project Manager

Mining operations at the Tarrawonga Coal Mine commenced in 2006. Now in its fifth year of operation, the site currently employs 70 full time personnel with production levels near our approved maximum output level of 2 million tonnes of Run of Mine (ROM) Coal per annum.

This will be a significant year for us as we evaluate a significant expansion (the Tarrawonga Coal 'Life of Mine' Project). In this newsletter we have provided a preliminary outline of the proposed Project and the environmental studies currently being undertaken.

Over the next 12 to 18 months we will be issuing regular newsletters updating the community about the Tarrawonga mine. The newsletters will provide updates on the Project and key findings of the studies. Contact details are provided in this newsletter for anyone seeking additional information or wishing to discuss the existing Tarrawonga Coal Mine or the proposed Project further.

Regards
Jason Conomos
Project Manager

Inside this Issue:

| | |
|---|---|
| From the Project Manager | 1 |
| Tarrawonga Coal Project | 1 |
| Environmental Assessment of the Tarrawonga Coal Project | 2 |
| Bore Census | 2 |
| Consultation | 2 |

Overview of the Proposed Tarrawonga 'Life of Mine' Coal Project

The proposed extension to the Tarrawonga Coal Mine would involve mining to the east and to the north of the existing Mining Lease (ML1579). The main components of the proposed Project include:

- Open cut mining of an additional 39 million tonnes of coal (approximately).
- An increase in the total mine life from approximately 10 years to 23 years.
- An increase in the coal production rate from 2 to 3 million tonnes per annum, which would involve an increase in the mining fleet and road transport to the Whitehaven Coal Handling and Preparation Plant.
- Extension of the open pit by approximately 1,500 metres to the east and 400 m to the north of the current open pit.
- Extension of the existing Northern Emplacement, Southern Emplacement and open cut infill areas.
- Relocation of the existing on-site coal crushing and screening facilities, workshops and administration areas to a new, more centralised, location on the mine site.
- Potential construction of a conveyor to transport coal to the Boggabri Coal Mine coal processing plant and rail load-out facility.
- Construction and use of dams, channels, dewatering bores and other control measures to manage groundwater and surface water within and around the mine site, including the diversion of Goonbri Creek to the east around the open cut.
- Re-alignment of sections of Goonbri Road and Dripping Rock Road to the south and east of the mine site, respectively.

This project requires significant community and stakeholder consultation, as outlined on the following page. If approved the mine would be subject to strict approval conditions and environmental monitoring and management requirements.



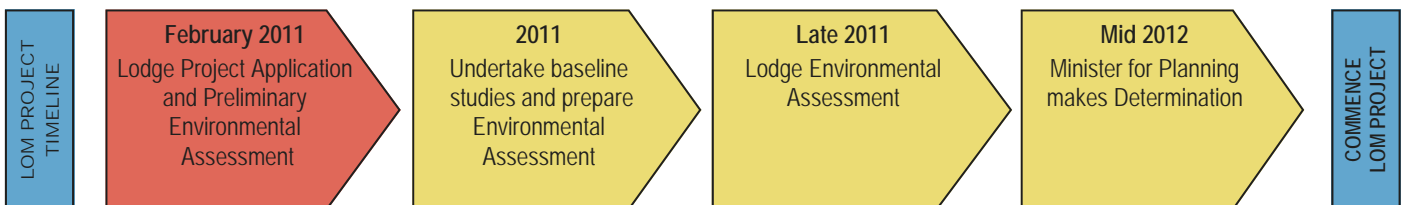
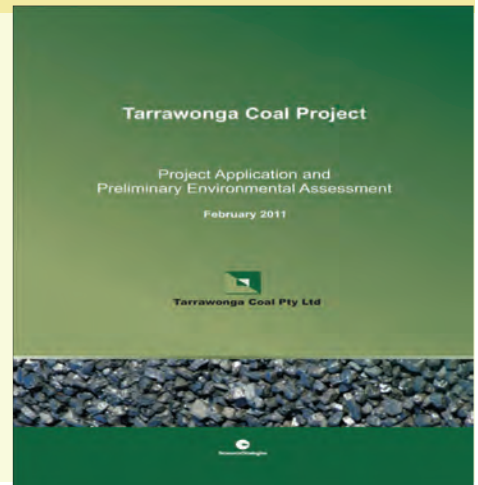
Environmental Assessment of the Tarrawonga 'Life of Mine' Coal Project

As required under NSW legislation, Tarrawonga Coal Pty Ltd would seek approval under the *Environmental Planning & Assessment Act, 1979* for the Life Of Mine Project. The flowchart below provides a summary of the process.

In order to initiate the process, Tarrawonga Coal Pty Ltd has recently lodged a Project Application and Preliminary Environmental Assessment (PEA) with the NSW Department of Planning. The PEA can be viewed on the Whitehaven website (www.whitehavencoal.com.au)

Tarrawonga Coal Pty Ltd has also started to prepare an Environmental Assessment (EA) for the Project. A number of baseline studies are currently being undertaken for the EA by specialist environmental consultants in the following fields;

- Groundwater and surface water;
- Flora and fauna;
- Aboriginal and non-Aboriginal heritage;
- Noise, blasting and air quality;
- Road transport;
- Socio-economic;
- Visual amenity; and
- Soils, land use and rehabilitation.



Proposed Bore Census for the Groundwater Study

As part of the preparation of the Project EA, Tarrawonga Coal Pty Ltd has commissioned specialists to conduct a groundwater study. To do this we will need to obtain basic information about existing bores in the vicinity of the Project through a 'Bore Census' to identify current groundwater users and determine current groundwater levels.

The Bore Census will involve:

- meeting with landowners who have bores and are interested in participating in the Bore Census (i.e. providing basic details about their bores); and
- inspecting bores in the vicinity of the Project (with the permission of the relevant landowner) and recording information such as their location, current groundwater level, water quality and other construction/water

usage details.

We propose to undertake the Bore Census between April and May 2011.

Landowners with bores in the vicinity of the Project who would like to participate in the Bore Census should contact Whitehaven's Environmental manager, Danny Young via the contact details provided in this newsletter.

All participating landowners will be contacted by Tarrawonga Coal Pty Ltd to arrange an appropriate date/time to meet with the landowner and conduct an inspection of their bores and to obtain construction and water use information if available.

Project Community Consultation

Community consultation will be undertaken to provide information about the Project, identify community issues and concerns, and to enable Tarrawonga Coal Pty Ltd to factor them into the Environmental Assessment. The following activities will be undertaken to enable comment and input:

- Newsletters, such as this, will be circulated to surrounding residences and relevant stakeholders to provide Project status updates, study findings, and outcomes.
- The Tarrawonga Community Consultative Committee (CCC) will be kept informed with regard to status of the project so information can be referred back to the community.
- Meetings with groups and/or individual stakeholders will be held to discuss issues and provide updates on the specialist environmental studies. This will include a community consultation day prior to lodgement of an Environmental Assessment.
- Copies of the EA will be made available for public review and comment.

We welcome your input into the development of this project and encourage you to either contact us with any questions or concerns, or to provide your views through the formal process outlined above.

Tarrawonga Environmental and Community Enquiries

Environmental Enquiries:

Danny Young

Group Environmental Manager

Phone: (02) 6741 9316

Fax: (02) 6742 3607

Email:

dyoung@whitehavencoal.com.au

Community Enquiries:

Tim Muldoon

Community Liaison Officer

Phone: (02) 6741 9302

Fax: (02) 6742 3607

Email:

tmuldoon@whitehavencoal.com.au

Complaints Hotline:

0429497730

For more information on Whitehaven Coal, please visit:
www.whitehavencoal.com.au

TARRAWONGA COAL MINE Community Newsletter

Issue 2, July 2011



Inside this issue:

| | |
|--|---|
| From the Project Manager | 1 |
| Update on the Project | 1 |
| Environmental Assessment of the Project | 1 |
| Tarrawonga and Boggabri Heads of Agreement | 2 |
| Consultation | 2 |

From the Project Manager

This is the second community newsletter produced by Tarrawonga Coal in relation to its 'Life of Mine' Project (the Project). Our first newsletter in April 2011 introduced the Project and outlined the lodgement of an application and preliminary assessment to the NSW government.

This edition of the newsletter provides an update on the progress of the specialist environmental studies being undertaken for the Project and describes the key refinements we have made to the Project description since the first newsletter. These changes have been made as a result of our feasibility studies, our recent Heads of Agreement with Boggabri Coal Pty Ltd, community feedback and consultation with NSW

government departments.

These changes reduce the Project's environmental footprint and reflect our commitment to open consultation and consideration of community concerns.

Contact details are included on the following page and we welcome any requests for further information or any questions you may have in relation to the existing Tarrawonga Coal Mine or the proposed Project.

Regards
Jason Conomos
Project Manager

Update on the Proposed Project

The 'Life of Mine' Project is a proposed extension to the existing Tarrawonga Coal Mine. It would involve mining to the east and north of the existing Mining Lease (ML 1579).

Since the last newsletter in April 2011, a number of refinements have been made to the Project design and layout. These include:

- Relocation of the proposed new mine facilities area away from the flat agricultural land south of Goonbri Creek, to the area immediately adjacent to the existing mine and north of Goonbri Creek. This new area is located closer to the existing facilities and minimises potential impacts on the plains located to the south and east of the Project.
- Adjustment of the proposed Goonbri Road re-alignment so that it now more closely follows the existing road corridor. This adjustment also minimises potential impacts on the plains located to the south and east.
- Use of Boggabri Coal Pty Ltd's proposed coal processing infrastructure and new rail load-out facilities once they are constructed and commissioned. Further details of the 'Heads of Agreement' for this sharing of infrastructure between the adjoining mines can be found on the following page.
- Installation and use of an internal haul road within a new 'services corridor' between the Tarrawonga Coal Mine and the Boggabri Coal Mine.

The figure provided on the following page illustrates the indicative general arrangement of the proposed Project.

Environmental Assessment of the Project

Tarrawonga Coal Pty Ltd will seek approval under the NSW *Environmental Planning & Assessment Act, 1979* and the Commonwealth *Environment Protection and Biodiversity Conservation Act, 1999* for the Project. The flowchart below provides a summary of the process.

Since our last newsletter, the Project has moved into the next phase of the process and we are currently completing baseline studies and preparing an Environmental Assessment for the Project. The NSW Department of Planning and Infrastructure (DP&I) has also recently issued the Director General's Environmental Assessment Requirements for the Project. These are available on the DP&I website (<http://majorprojects.planning.nsw.gov.au/>).

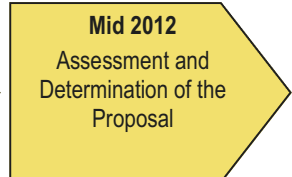
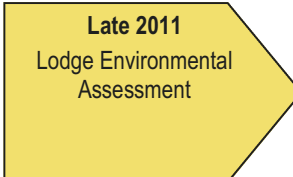
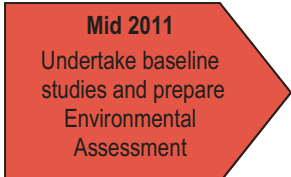
Studies currently being undertaken by specialist environmental consultants include:

- groundwater and surface water;
- flora and fauna;
- Aboriginal and non-Aboriginal heritage;
- noise, blasting and air quality;
- road transport;
- socio-economic;
- visual amenity, soils, and land resources.

Data collection and field surveys either have been or are in the process of being completed for the flora, fauna, Aboriginal and non-Aboriginal heritage, road transport, visual and soils and land resource assessments. Modeling of groundwater, surface water, noise and air scenarios for the Project is also well underway.

Once completed, these studies will form part of the Environmental Assessment for the Project. They will assess potential impacts of the Project on the environment and specify management measures to avoid, minimise, mitigate or offset those impacts.

PROJECT TIME-LINE



COMMENCE PROJECT



Tarrawonga and Boggabri Heads of Agreement

In May 2011, a Heads of Agreement was reached between Tarrawonga Coal Pty Ltd and Boggabri Coal Pty Ltd. This Agreement will allow the majority of coal from the Tarrawonga Mine to be processed at the Boggabri Mine's proposed upgraded Coal Handling and Preparation Plant and associated Rail Load-out Facilities.

The arrangement between the two mines would commence once construction and commissioning of the upgrades to the Boggabri Coal Mine is completed. This is expected to occur early in the Project life. Up until the upgraded facilities are commissioned, coal from the Tarrawonga Coal Mine would continue to be transported from the mine site via the existing coal haulage route to the Whitehaven Coal Handling and Preparation Plant at Gunnedah, which is located to the south of the mine.

During the life of the Project, domestic coal produced at the Tarrawonga Coal Mine (i.e. up to 450,000 tonnes per annum) would continue to be collected at the mine gate by customers and transported from the site on the local road network.

Project Community Consultation

Tarrawonga Coal's community consultation will continue throughout the planning phase for the Life of Mine Project and beyond. The objective of this consultation is to provide any interested parties with information about the project and to identify community issues and concerns so we can factor them into the Environmental Assessment. The following activities will be undertaken to enable comment and input, and we encourage you to participate:

- Newsletters, such as this, will be circulated to surrounding residences and relevant stakeholders to provide Project status updates, study findings, and outcomes.
- The Tarrawonga Community Consultative Committee (CCC) will be kept informed with regard to status of the Project so information can be referred back to the community. The next CCC meeting is scheduled for 27 July 2011.
- Meetings with groups and/or individual stakeholders will be held to discuss issues and provide updates on the specialist environmental studies. This will include a community consultation day prior to lodgement of the Environmental Assessment.
- Copies of the EA will be made available for public review and comment.

We welcome your input into the development of this Project and encourage you to either contact us with any questions or concerns, or to provide your views through the process outlined above.

Tarrawonga Environmental and Community Enquiries

Environmental Enquiries:

Danny Young

Group Environmental Manager

Phone: (02) 6741 9316

Fax: (02) 6742 3607

Email:

dyoung@whitehavencoal.com.au

Community Enquiries:

Tim Muldoon

Community Liaison Officer

Phone: (02) 6741 9302

Fax: (02) 6742 3607

Email:

tmuldoon@whitehavencoal.com.au

Complaints Hotline:

0429 497 730

For more information on Whitehaven Coal, please visit:

www.whitehavencoal.com.au

TARRAWONGA COAL MINE Community Newsletter

Issue 3, September 2011



Inside This Issue:

| | | |
|--------------------------------|---|---|
| From the Project Manager | 1 | This is the third community newsletter produced by Tarrawonga Coal in relation to its "Life of Mine" Project (the Project). |
| Update on the Proposed Project | 1 | Our first newsletter in April 2011 introduced the Project and outlined the lodgement of an application and preliminary assessment to the NSW government. |
| Project Community Consultation | 1 | The second newsletter (July 2011) provided an update on the progress of the specialist environmental studies being undertaken for the Project and noted key refinements to the Project. |
| Community Information Day | 1 | This edition provides a further update on the progress of the specialist environmental studies and includes details of the |
| Proposed Project Layout | 2 | |
| Contact Details | 2 | |

From the Project Manager

upcoming Community Information Day to be held at the Boggabri Bowling Club on the 7th October 2011.

Contact details are included on the following page and we welcome any requests for further information or any questions you may have in relation to the existing Tarrawonga Coal Mine or the proposed Project.

Regards

Jason Conomos

Project Manager

Update on the Proposed Project

The "Life of Mine" Project is a proposed extension to the existing Tarrawonga Coal Mine that would involve mining to the east and north of the existing Mining Lease (ML 1579).

Specialist consultant studies have been progressing well since the last newsletter was issued in July 2011, with the following studies now at the final draft stage:

- Transport Assessment (Road)
- Visual Assessment
- Aboriginal Cultural Heritage Assessment; and
- Non-Aboriginal Heritage Assessment

Draft modelling of predicted air quality and noise impacts has been completed with the remaining specialist studies due to be finalised in the coming weeks.

On this basis, Tarrawonga Coal expects to submit the completed Environmental Assessment (EA) to the Department of Planning and Infrastructure in November 2011 for adequacy assessment prior to it being placed on public display for review and comment.

Project Community Consultation

Community consultation over the last couple of months has included a special presentation to the Tarrawonga Coal Mine Community Consultative Committee (CCC) on the progress of the Project as well as meetings with various stakeholders.

Community Information Day

Tarrawonga Coal will be holding a Community Information Day at the Boggabri Bowling Club this month. The day will provide an opportunity to learn more about the Project and all members of the community with an interest in the Project are invited to attend.

Attendees will be able to view the results from studies undertaken for the Environmental Assessment for the Project and access information about how Tarrawonga Coal plans to address any identified potential impacts.

Key Tarrawonga Coal representatives will be available for one-on-one discussions as well as a number of the specialist consultants who have undertaken the studies as part of the Environmental Assessment.

We welcome your input into the development of this Project and encourage you to either contact us with any questions or concerns, participate in the Community Information Day or refer any queries or concerns to a member of the CCC who will be able to make Tarrawonga Coal aware of your concerns.

Community Information Day - Key Information

Location: Boggabri Bowling Club

Date & Time: Friday 7th October 2011, Midday - 6:00pm

Bus Tours: From Boggabri Bowling Club to the mine site

Tours Leave: Approximately 1:00pm and 3:00pm

Catering: BBQ Lunch, afternoon tea and non-alcoholic beverages provided

Tarrawonga Environmental and Community Enquiries

Environmental Enquiries:

Danny Young

Group Environmental Manager

Phone: (02) 6741 9316

Fax: (02) 6742 3607

Email:

dyoung@whitehavencoal.com.au

Community Enquiries:

Tim Muldoon

Community Liaison Officer

Phone: (02) 6741 9302

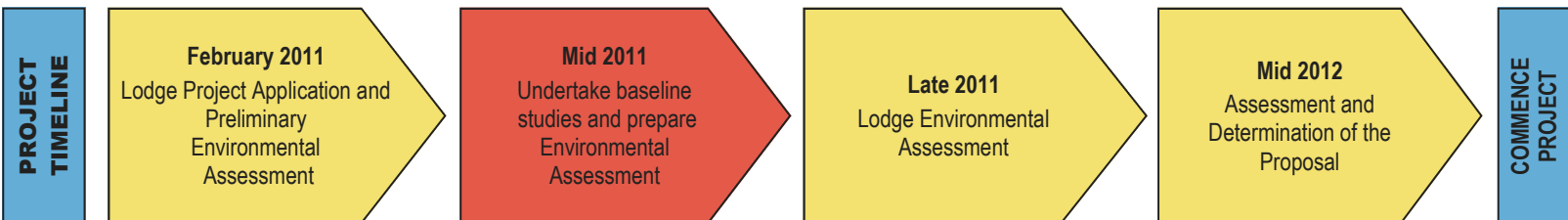
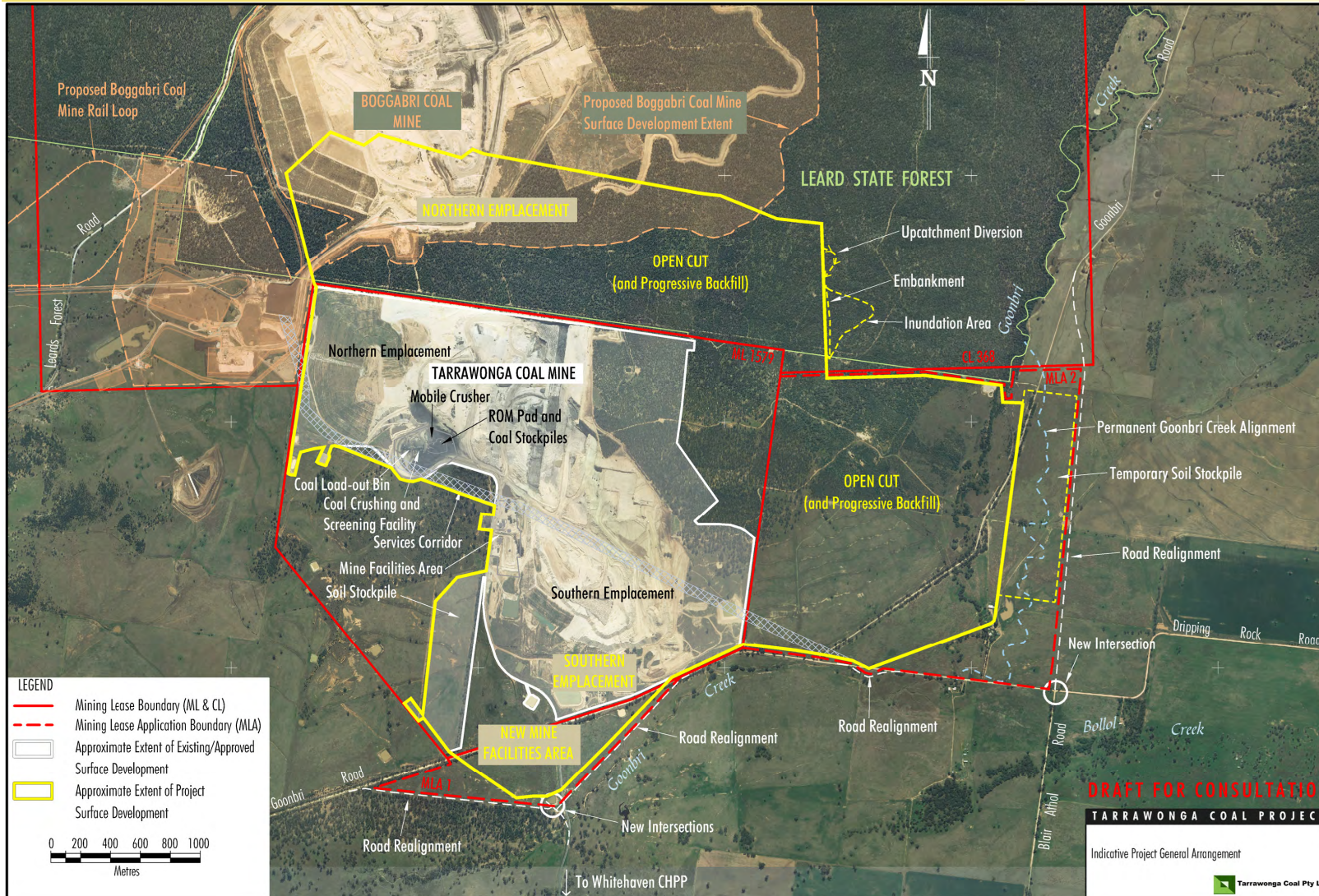
Fax: (02) 6742 3607

Email:

tmuldoon@whitehavencoal.com.au

Complaints Hotline:

0429 497 730





Tarrawonga Coal Community Information Day

Tarrawonga Coal Mine will be holding a Community Information Day at the Boggabri Bowling Club to discuss its Life-of-Mine Extension Project. All members of the community with an interest in the Project are invited to attend.

The Information Day is an opportunity to learn more about the Tarrawonga Extension Project which involves a 17 year continuation of current operations with an increase in production from 2 million tonnes per annum (Mtpa) to 3 Mtpa and a number of infrastructure changes at the mine site.

Attendees will be able to view the results from the Environmental Assessment for the Project and access information about how Tarrawonga Coal will be addressing potential impacts from mining on aspects such as noise, air quality, surface and groundwater, biodiversity and rehabilitation management.

Key Tarrawonga Coal representatives will be available for one-on-one discussions, as will a number of specialist consultants who undertook the environmental studies as part of the Environmental Assessment report.

Key Information

- Location:** Boggabri Bowling Club, 65 Laidlaw Street, Boggabri
- Date & Time:** Friday 7th October 2011, Midday - 6:00pm
- Bus Tours:** From Boggabri Bowling Club to the Tarrawonga Coal Mine.
Tours will leave at approximately 1:00pm and 3:00pm.
- Food & Drink:** BBQ Lunch, afternoon tea and non-alcoholic beverages provided

For further information please contact Danny Young (Group Environmental Manager) on 02 6741 9316, or Tim Muldoon (Community Liaison Officer) on 02 6741 9301.

Jason Conomos
Project Manager
Tarrawonga Coal

www.whitehavencoal.com.au

Project Overview and General Arrangement

The main activities associated with the development of the Project would include:

- continued development of mining operations to facilitate a Project ROM coal production rate of up to 3 Mtpa, including open cut extensions:
 - to the east within ML 1579 and MLA 2; and
 - to the north within CL 368 (MLA 3) which adjoins ML 1579;
- construction and use of a services corridor directly from the Project to the upgraded Boggabri Coal Mine Infrastructure Facilities¹;
- use of the upgraded Boggabri Coal Mine Infrastructure Facilities for the handling and processing of Project coal¹;
- construction and use of a new mine facilities area;
- use of an existing on-site mobile crusher for coal crushing and screening of up to 150,000 t of domestic specification coal per annum;
- use of an existing on-site mobile crusher to produce up to approximately 90,000 m³ of gravel materials per annum for direct collection by customers at the mine site;
- progressive backfilling of the mine void behind the advancing open cut mining operation with waste rock and minor quantities of coarse reject material;
- continued and expanded placement of waste rock in the Northern Emplacement (including integration with the Boggabri Coal Mine emplacement) and Southern Emplacement, as mining develops;
- realignment of sections of Goonbri Road and construction of new intersections;
- construction of an engineered low permeability barrier to the east and south-east of the open cut to reduce the potential for local drainage of alluvial groundwater into the open cut;
- removal of a section of Goonbri Creek within the Project open cut and the establishment of a permanent Goonbri Creek alignment and associated flood bund to the east and south-east of the open cut;
- progressive development of sediment basins and storage dams, pumps, pipelines and other water management equipment and structures; and
- other associated minor infrastructure, plant, equipment and activities.

The proposed life of the Project is 17 years, commencing 1 January 2013. This would extend the life of the currently approved operations at the Tarrawonga Coal Mine by approximately 12 years (i.e. until 2029).

¹ Subject to approvals and upgrades being in place for the transfer of Project ROM coal to the Boggabri Coal Mine Infrastructure Facilities.

MAJOR PROJECT ASSESSMENT - TYPICAL STEPS

Under Part 3A of the Environmental Planning and Assessment Act 1979



Tarrawonga Environmental and Community Enquiries

Environmental Enquiries:

Danny Young
Group Environmental Manager
Phone: (02) 6741 9316
Fax: (02) 6742 3607
Email:
dyoung@whitehavencoal.com.au

Community Enquiries:

Tim Muldoon
Community Liaison Officer
Phone: (02) 6741 9302
Fax: (02) 6742 3607
Email:
tmuldoon@whitehavencoal.com.au

Complaints Hotline:

0429 497 730

For more information on Whitehaven Coal, please visit:
www.whitehavencoal.com.au

